

X16



X-Yachts, founded in 1979, is reputed for making yachts that are synonymous with superior quality, skilled craftsmanship and innovative design, giving their owners and crew an exceptional sailing experience. Made using build technologies that result in a supreme sailing performance, each models results from a design based on an "in-depth" understanding of the elements that make a yacht sail well.

The logo consists of the letters 'X6' in a bold, italicized, sans-serif font. The 'X' is significantly larger than the '6', and both are slanted to the right. The '6' has a thick, rounded bottom.

New state-of-the-art



The X6 is the first model in a new range, aimed at the discerning sailor and his crew. It utilises advanced, proven technology and build techniques which only incorporate first class components, enabling the exploration of new uncharted horizons in comfort.

The X6 comes with a comprehensive range of options to help tailor each individual's sailing experience. This brochure will guide you through most of the standard and optional features.

X-Yachts' background being the builder of the most winning production yachts for more than three decades, is mirrored in the X6's technical specification.

Vacuum infused epoxy / sandwich hull (see explanation on Page 8), galvanized keel hull girder pioneered by X Yachts since 1981, epoxy encapsulated low gravity lead keel faired to original keel sections, discontinued rod rigging with hydraulic backstay adjuster, flush recessed and faired hull skin fittings and standard folding propeller all guarantee 'Superb Sailing Pleasure'.

The X6 offers an easily handled package, ideal for double handed sailing.

“Architecture should
speak of time and
place, but yearn for
timelessness”

Frank Gehry



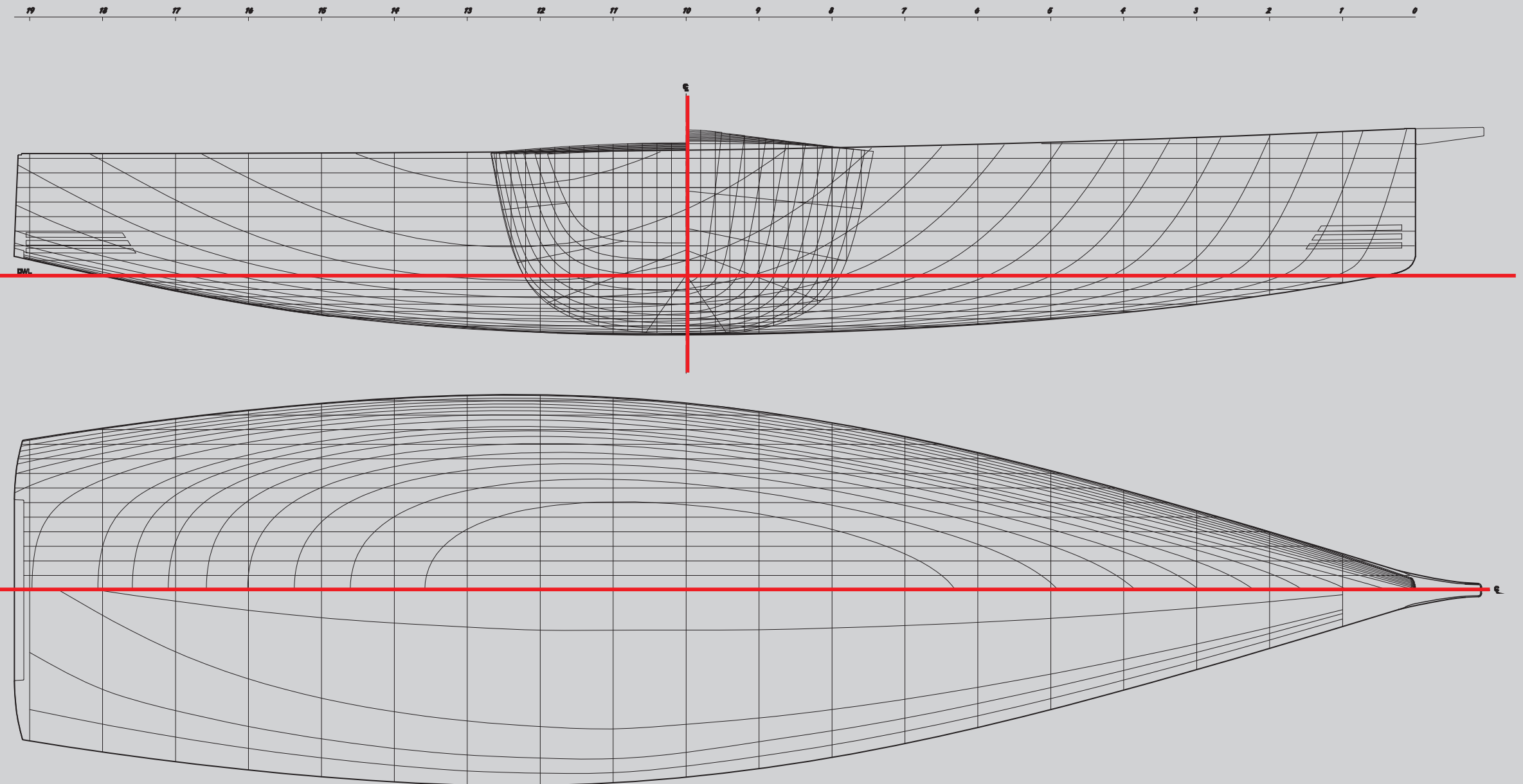
Designer's comments

The story behind the design & construction

The X6's hull is designed to meet the demands from sailors, who want to enjoy sailing in a wide range of conditions. In contrast to the mainstream trends of yachts with a very modern appearance, the X6 is meant to be enjoyable and easily controllable in more than just 'reaching' conditions. The upwind performance and sea keeping has been given a lot of attention whilst choosing design parameters and various aspect ratios.

Achieving comfort when sailing to windward in a rough sea was an essential prerequisite in the X6 hull design. Deep V sections, modest displacement, generous stability, and a powerful yet easy to handle sail plan offers smooth sailing through the waves. This combined with the thoroughbred X-Yachts racing heritage delivers a new generation of world class cruising.

The X6 construction combines advanced materials in a sensitive way by using vacuum epoxy infused fibres in a sandwich construction. Local carbon fibre reinforcements give the hull the rigidity required to put the rig in tension with very little deformation.



Using a combination of Eglass and carbon skins instead of a full carbon construction delivers high overall strength and stiffness whilst producing a healthy resistance to local impact.

Comfortable stability has been achieved with a high ballast ratio instead of an extreme hull shape. Wetted surface area and friction drag is minimised, which is essential for light wind performance.

Clutter free deck

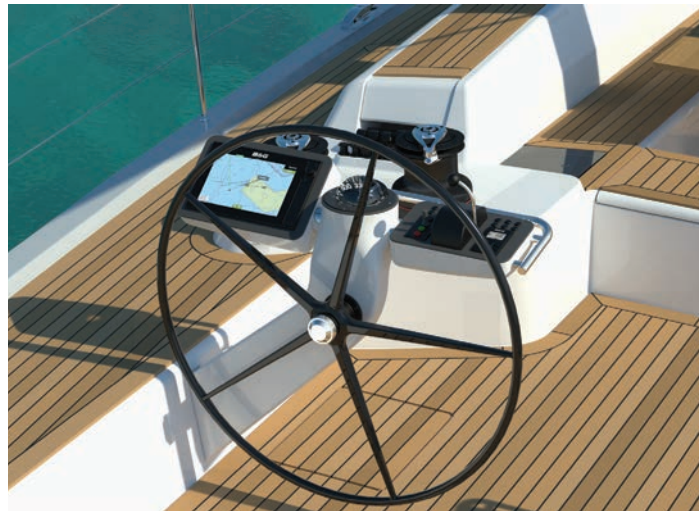
The X6 rewards the owner with a deck and rigging layout fit for a king.

Halyards and control lines are led back to the aft cockpit coamings, making for a clutter free environment. It is decked out with vacuum applied laid teak on sidedecks, all seating, cockpit sole and the inside of the transom door / swim platform.

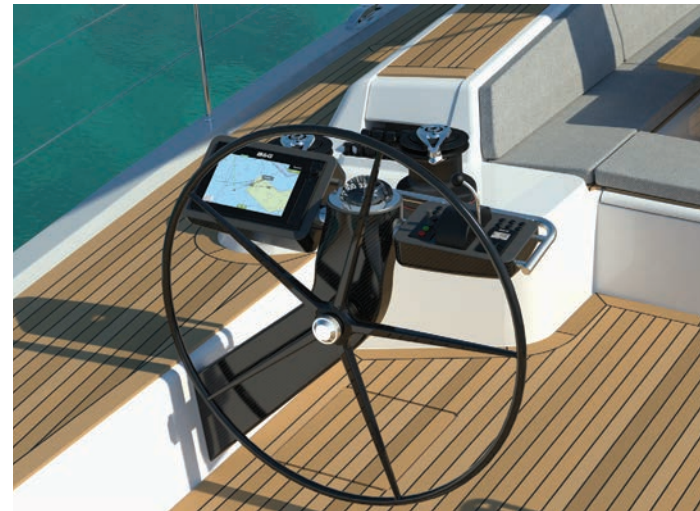
All pedestals have side boxes which hold the standard electronic throttle and any thruster controls as well as controls for the furlers. Adjustable recessed foot chocks also add comfort whilst under sail.

X6 comes with a variety of optional extras (shown in image to right) on deck including:

- teak on coachroof top / coamings
- bow sprit in carbon
- main sheet arch (GRP or carbon)
- V-shaped furling boom (GRP or carbon), built by FurlerBoom
- Williams 320 Jet Rib can be housed in the stern garage



White GRP wheel pedestals and boxes come standard with black composite wheel and 128mm Silva compass.



Optional custom clear coated carbon pedestals and boxes with optional Ritchie 130mm stainless steel compass and wheel rim in high gloss varnished, laminated mahogany wood.





Multiple choice

The cockpit area can be customised to your needs, offering a table with adjustable legs, which can be lowered to either coffee table height or to support a large sun bathing area as standard.

Optional cockpit cushions are held in place with fitted aluminium sections holding each cushions boltrope. Optional cockpit fridge is located in the aft part of the port side cockpit U-sofa arrangement.



The cockpit area can be transformed into a large sunbathing platform



The cockpit table can be a coffee table



The cockpit dining table can be increased to a large dining table.

Left: Two small transom hatches featured eitherside of the transom door incorporate the engine compartment air intake on the port side and hide the optional retractable gangway (metal or carbon fibre), on the starboard

Tailor made

The X6 has been designed to ensure optimal pleasure. The coachroof is raised to allow for a panoramic view and increased natural light when below deck whilst two deck showers are fitted - one in the cockpit and one in the stern garage.

Short handed sailing is easily controlled by four electrical self-tailing winches for sheets, halyards and reef lines, all positioned within easy reach of the helmsman. The optional halyard winches can either be mounted on the deck by the mast or on the mast itself and the 106% furling genoa can be easily controlled with an electrical Reckmann headstay furler that comes as standard.

White painted aluminium mast and boom comes standard.



Right: Image displays some available options. The foreground boat has a standard coach roof recessed sprayhood. The middle boat has an optional forward cockpit and helmsman bimini with stainless steel tubes and impregnated canvas with optional solar panels recessed alongside flush coachroof skylights. The background boat has optional carbon rigid biminis with recessed solar panels.





Sumptuous living

Danish design and architecture is famous for its clean, timeless style. It showcases luxury whilst also being functionally designed to work either out on the open seas or moored up in harbour.

Superior quality, detailed interior carpentry and materials used sets it apart from mass produced boats, producing an exquisite, natural interior.

The panoramic deck saloon windows and hull portlights allow for ample light to flood in, gifting the interior with a bright and airy ambiance.

Plentiful storage space throughout allows for an uncluttered, 'live on board' lifestyle, giving you a place one can retreat to when the weather outside is less forgiving.

Interior Options

Standard version is A1 / B1 / C1

A Interior options for the forward section

- A1 Owner's double berth on centre line, en-suite head/shower to port, full length sail cabin
- A2 Owner's double berth to port, en-suite head/shower forward, full length sail cabin
- A3 Owner's double berth on centre, 2 single berths on freeboard to port, shared head/shower to starboard

B Interior options for the middle section

- B1 Extended galley and U sofa to port
L-sofa and nav station to starboard
- B2 Work shop, Galley and U-sofa to port
L-sofa and nav station to starboard
- B3 Aft cabin's head, Galley and U-sofa to port
L-sofa and nav station to starboard

C Interior options for the aft section

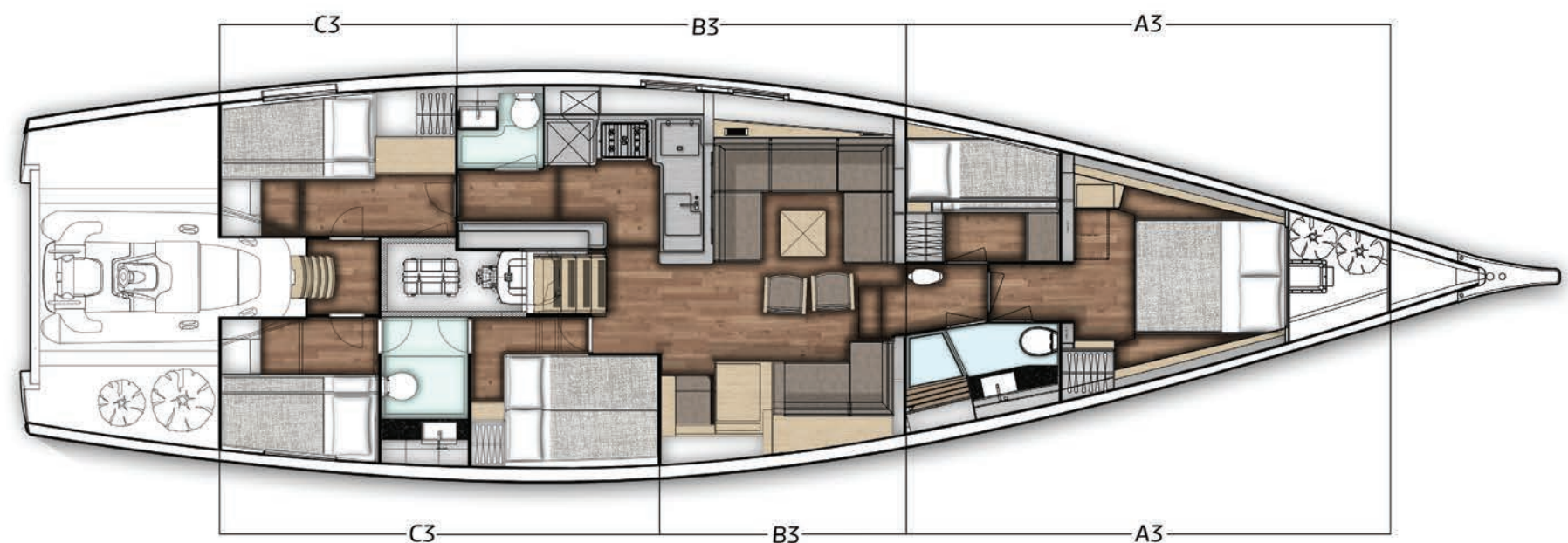
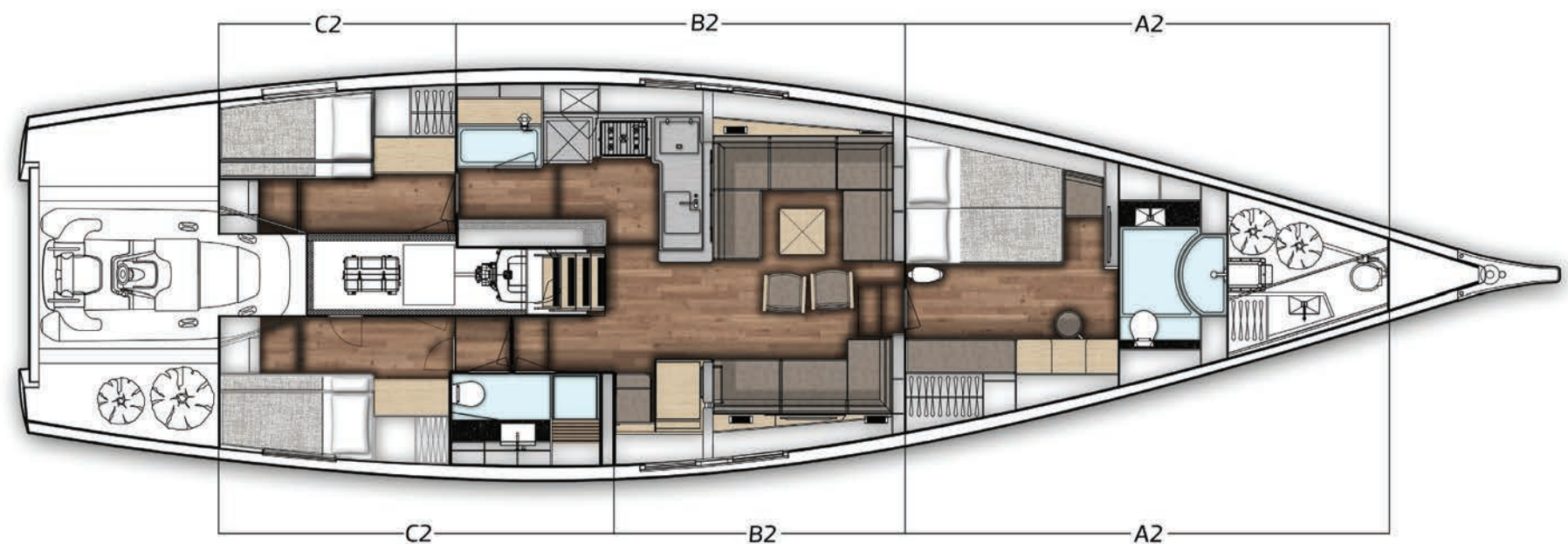
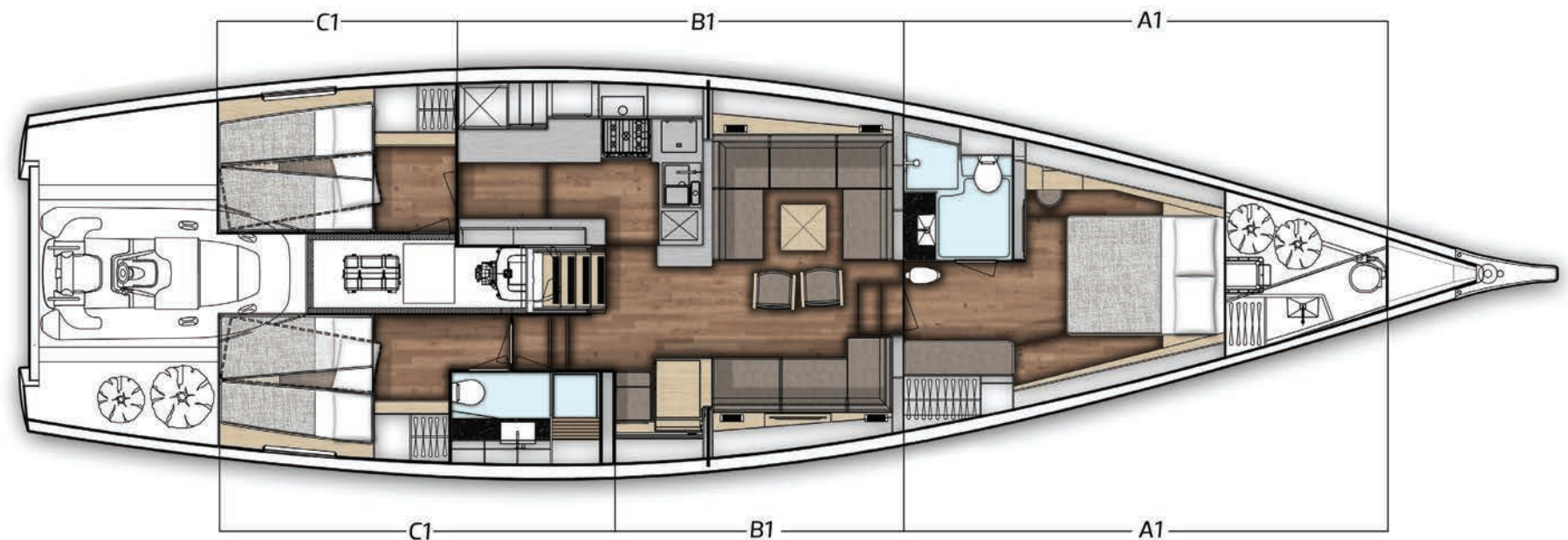
- C1 Double berths to port
Double berths and head/shower to starboard
- C2 2 single berths on freeboard to port
2 single berths on freeboard and head/shower to starboard
- C3 2 single berths on freeboard to port
2 aft cabins with shared head/shower to starboard

Combinations available

- A1/B2/C1 • A1/B3/C3 • A2/B1/C1 • A2/B2/C2
- A3/B1/C1 • A3/B2/C1 • A3/B2/C2

Notes

- A3 Reduced sail cabin length
- C1 Double berths can be either converted to twin berths or 2 single berths on freeboard
- C3 Modified cockpit layout integrates a cockpit floor entrance hatch
- B3/C3 Option B3 can only be chosen with option C3 to allow port aft cabin access to a head compartment. No main sheet





Saloon

Above: Standard surface 'Steady Oak' veneers which is brushed and lightly varnished, giving a rustic ambience.

The bulkhead-recessed shelves can accommodate books and decorative items along with integrated, ambient LED lighting.

The 28mm foam cored, sandwich floor boards come with a varnished, walnut top surface.

The large U-sofa seats eight guests around the table which can be lowered to become a smaller coffee table whilst the chairs on the aisle can be fixed to the floorboards.



Galley

Above: Optional matte-surfaced 6mm solid stainless steel worktop with a seamless integrated Gastronorm double sink complete with beech wood cutting board

The galley comes in two versions, the standard being an extended and incredibly spacious area with white painted and hand polished satin finish and worktops in black Corian (other options available).

The space is designed around the 'Gastronorm Catering System' which transforms the space

into a more functional and significantly safer place to prepare and cook food whilst at sea.

Option to add an additional front opening fridge on top of the standard 135-litre fridge and 175-litre top opening freezer as well as an additional dishwasher and coffee maker.



Nav Station

The forward facing nav. station provides easy access to the yacht's customised switch panel and control centre. There is ample space for charts and navigational literature as well as for the yacht's communication systems.



Owner's cabin

Owner's cabin located in front of the mast, with easy to reach storage space under the large double berth and large double wardrobe on starboard side with hangers and shelves. There is a sofa directly in front of the wardrobe with additional drawers below.

All berths have comfortable, double density foam mattresses which rest on laminated curved battens, providing ultimate ventilation and well-being.

Right: Dressing table on port side with integrated seat, vanity mirror and storage compartment. Bulkhead recessed bookshelves come with room for optional flatscreen television.





Living Quarters

Number of cabins can vary on choice of layout. The image above displays the port aft cabin which can either be twin or single berths on freeboard with ample storage both under the berth and in a large wardrobe with hangers, shelves and drawers.

All heads come with Tecma electric toilets, white Corian table and integrated sink, high quality mixer faucets and built-in ambient lighting, cupboards and a mirror.

Inside the luxurious owner's heads, there is a dedicated shower room in all layout options.

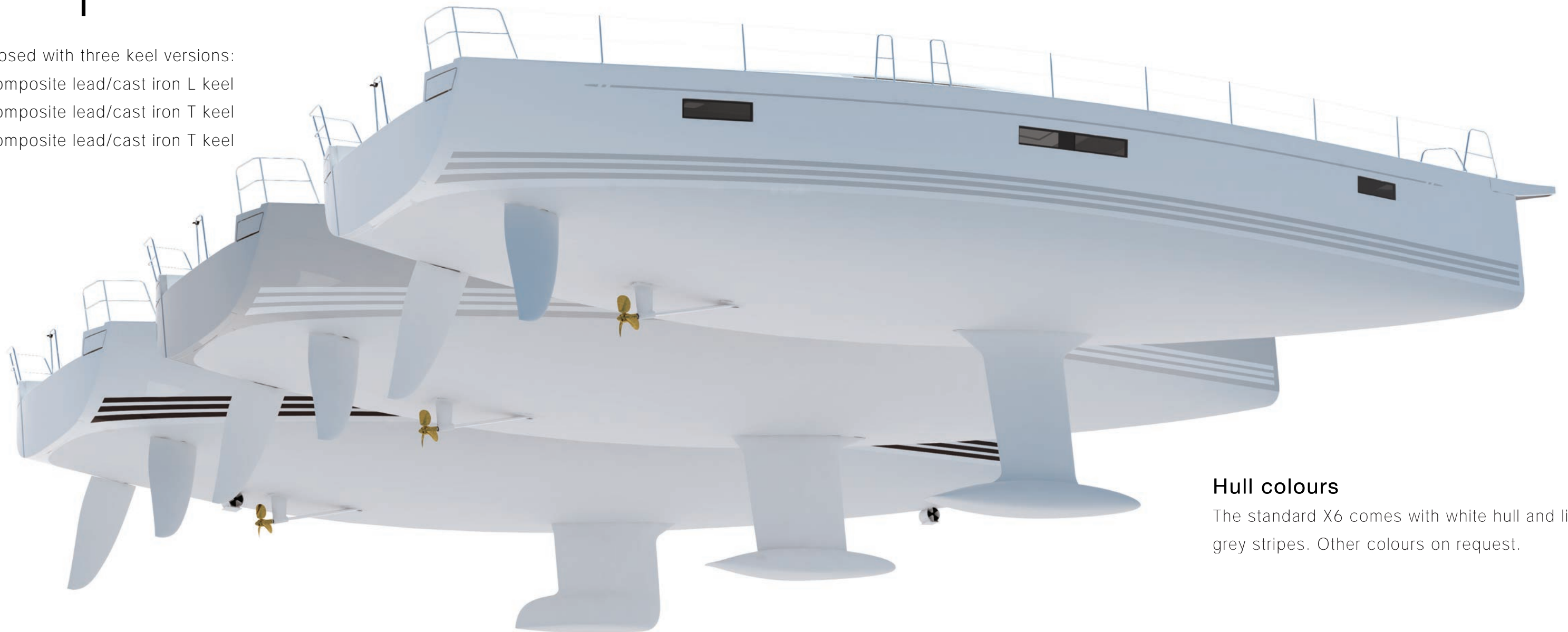
Right: Four cabin version's head and shower compartment.



Foil options

The X6 is proposed with three keel versions:

- 2.6m draft composite lead/cast iron L keel
- 3.0m draft composite lead/cast iron T keel
- 3.4m draft composite lead/cast iron T keel



Hull colours

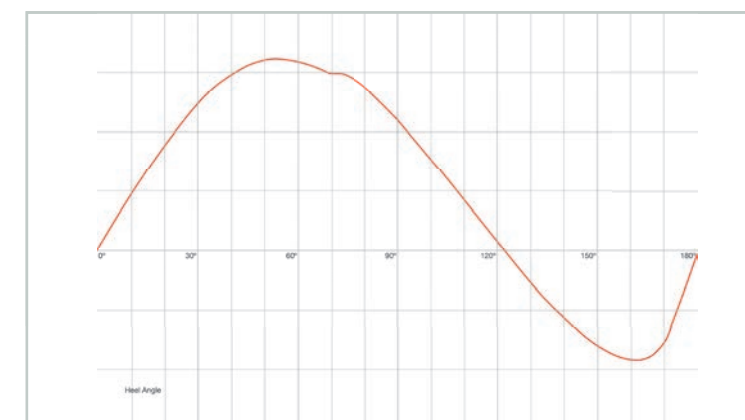
The standard X6 comes with white hull and light grey stripes. Other colours on request.

All X-Yachts keels are encapsulated in GRP and faired to get the exact NACA profile necessary for efficient hydrodynamics

Twin rudder blades allow for maximum control whilst heeled and give space for the stern garage.

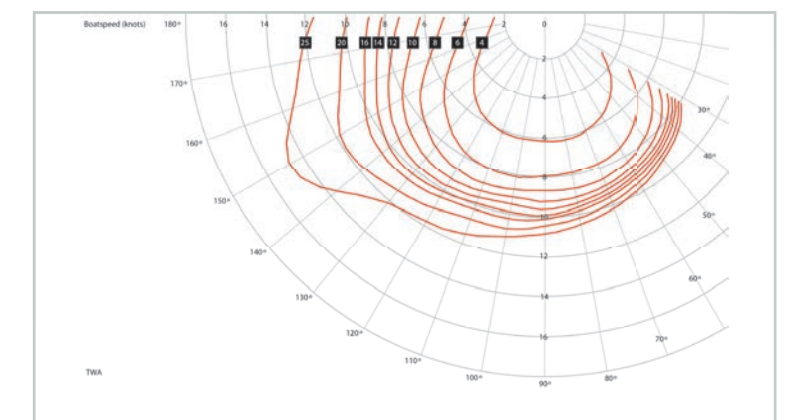
The X6 comes with a retractable bow thruster and is offered with a retractable stern thruster. 3-blade 24" folding propeller driven by 160HP gives the X6 a comfortable motoring speed in excess of 9 knots.

X6 stability curve

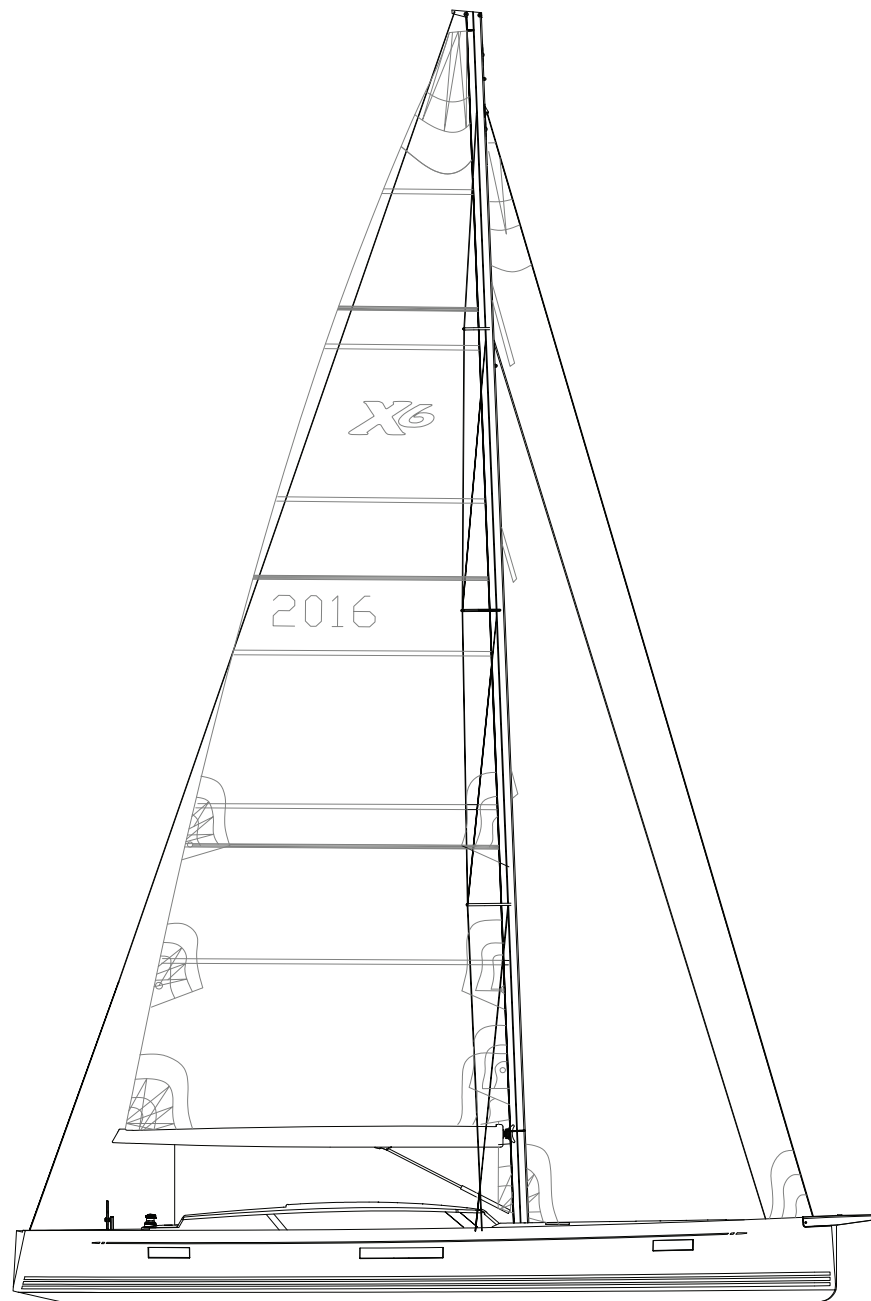


The X6 stability surpasses the ISO minimum requirement by a large margin

X6 speed prediction



This polar plot demonstrates very promising all round performances



X6 Dimensions

Overall length	20.10 m	66 ft
Hull length	19.19 m	63.1 ft
Waterline length	17.85 m	58.6 ft
Beam	5.40 m	17.8 ft
Draft (option A: L-keel)	2.6 m	8.5 ft
Draft (option B: T-keel)	3.0 m	9.8 ft
Draft (option C: T-keel)	3.4 m	11.2 ft
Displacement (option B)	29,500 kg	65,030 lbs

ENGINE/TANKS

Engine (standard)	119 kW	160 HP
Fuel capacity	1,200 Ltr	317 (US) gal
Water capacity	1,000 Ltr	264 (US) gal

SAIL AREAS

Mainsail	130 m ²	1,399 ft ²
Genoa (106%)	90 m ²	969 ft ²
Asymmetric spinnaker	280 m ²	3,014 ft ²

Sail areas are based on standard mast. Standard mast is a keel stepped, tapered, 3-spreader aluminium mast. Optional carbon mast/boom on request.



X-Yachts[®]
WORLD CLASS SINCE 1979